



Cortez Fire Protection District Fuel Moisture Sampling Summary



Date	4/8/2024												
Site	Elevation	Utah Juniper	Pinyon Pine	Long Leaf Willow	Gambel Oak	Big Sage	Grasses	10 hour	1000 hour	Litter	Wind	Max Temp	Max RH
Stinking Springs											0	0	50.00%
Hodges	6,564										0	0	50.00%
Lower Goodman	5,622	86.83%	88.88%			199.41%		25.05%	17.26%	4.58%	2	65	18.60%
Cannon Ball Masa	5,494	53.80%	101.73%			152.22%		10.28%	16.50%	12.16%	3	65	19.00%
Averages		Utah Juniper	Pinyon Pine	Long Leaf Willow	Gambel Oak	Big Sage	Grasses	10 hour	1000 hour	Litter	Wind	Max Temp	Max RH
Overall Average		70.32%	95.31%			175.82%		17.67%	16.88%	8.37%	1	33	34.40%
Lower FDRA Average		70.32%	95.31%			175.82%		17.67%	16.88%	8.37%	3	65	18.80%
Upper FDRA Average											0	0	50.00%

Low	Moderate	High	Extreme
-----	----------	------	---------

Goodman						
Fuel Moisture Sampling Data						
Collection Record			Moisture Determinati			
Observer	Date/Time		Observer			
Luddington	8-Apr		Crosby			
Container #	Species (live)/Size Class (dead)	A	B	C	D	
		Gross Weight		Tare Weight	Water Weight	
		Wet	Dry			
1	1000 hour	48	40	0	8	
2	1000 hour	48.6	41.3	0	7.3	
3	1000 hour	90.6	79.4	0	11.2	
1	Utah Juniper	59.6	50	36.7	9.6	
2	Utah Juniper	61.8	50.8	36.7	11	
3	Utah Juniper	57.1	46.4	36.7	10.7	
1	Pinyon Pine	56.5	46.7	36.7	9.8	
2	Pinyon Pine	58.2	47.7	36.7	10.5	
3	Pinyon Pine	67.7	54.6	36.7	13.1	
1	Sagebrush, Mountain Big	65.2	45	36.7	20.2	
2	Sagebrush, Mountain Big	55.1	42.7	36.7	12.4	
3	Sagebrush, Mountain Big	57.3	45	36.7	12.3	
1	Litter	55.8	52.8	36.7	0.6	
2	Litter	47.3	46.1	36.7	0.7	
3	Litter	69.6	60	36.7	0.6	
1	10 Hour	72.2	65.1	36.7	7.1	
2	10 Hour	66.2	57.6	36.7	8.6	
3	10 Hour	67	64.5	36.7	2.5	
			Weather			
			Dry Blub	RH%	Wet Bulb	Wind
			65	19	44.8	2-3MPH S

--

on Record

Date/Time in Oven

04/08/24 - 1400

E	F	Averages
Dry Weight	Percent Moisture	
40	20.00%	17.26%
41.3	17.68%	
79.4	14.11%	
13.3	72.18%	86.83%
14.1	78.01%	
9.7	110.31%	
10	98.00%	88.88%
11	95.45%	
17.9	73.18%	
8.3	243.37%	199.41%
6	206.67%	
8.3	148.19%	
16.1	3.73%	4.58%
9.4	7.45%	
23.3	2.58%	
28.4	25.00%	25.05%
20.9	41.15%	
27.8	8.99%	

Cloud Cover

100%

Cannon Ball

Fuel Moisture Sampling Data

Collection Record		Moisture Determinati			
Observer	Date/Time	Observer			
Anderson	4/8/2024	Franks			
Container #	Species (live)/Size Class (dead)	A	B	C	D
		Gross Weight		Tare Weight	Water Weight
		Wet	Dry		
1	1000 hour	38.2	32.5	0	5.7
2	1000 hour	85.4	70.6	0	14.8
3	1000 hour	111	99.99	0	11.01
1	Utah Juniper	64.9	53.5	36.7	11.4
2	Utah Juniper	62.3	58.4	36.7	3.9
3	Utah Juniper	58.3	49	36.7	9.3
1	Pinyon Pine	62.4	49.5	36.7	12.9
2	Pinyon Pine	56	46.1	36.7	9.9
3	Pinyon Pine	58.4	47.6	36.7	10.8
1	Sagebrush, Mountain Big	58.7	46.5	36.7	12.2
2	Sagebrush, Mountain Big	56.1	44.1	36.7	12
3	Sagebrush, Mountain Big	61	45.7	36.7	15.3
1	Litter	61	58.4	36.7	2.6
2	Litter	70	67.1	36.7	2.9
3	Litter	53.6	51.4	36.7	2.2
1	10 Hour	68.3	65	36.7	3.3
2	10 Hour	70	67.1	36.7	2.9
3	10 Hour	60.6	58.5	36.7	2.1
		Weather			
		Wet Bulb	RH%	Wet Bulb	Wind
		65	19	44.8	2-3MPH S

--

on Record

Date/Time in Oven

04/08/24 - 1600

E	F	
Dry Weight	Percent Moisture	Averages
32.5	17.54%	16.50%
70.6	20.96%	
99.99	11.01%	
16.8	67.86%	53.81%
21.7	17.97%	
12.3	75.61%	
12.8	100.78%	101.73%
9.4	105.32%	
10.9	99.08%	
9.8	124.49%	152.22%
7.4	162.16%	
9	170.00%	
21.7	11.98%	12.16%
30.4	9.54%	
14.7	14.97%	
28.3	11.66%	10.28%
30.4	9.54%	
21.8	9.63%	

Cloud Cover

100%

Cortez Fire Protection District Fire Danger Calculator



CFPD North Fire Danger Rating Area - Forecast Weather & Fire Danger

Date Observed Indices				
Stations: Hodges, Stinking Springs				
Date:	8-Apr	9-Apr	10-Apr	11-Apr
Max Temp (F)	0	0	0	0
Minimum RH (%)	0	0	0	0
Windspeed (20'-mph)	0	0	0	0
Wind Direction	0	0	0	0
1-hr(%)	0	0	0	0
10-hr (%)	0.00%	0	0	0
1000-hr(%)	0.00%	0	0	0
0				
Recommended Fire Restrictions	0	None	None	None
<i>Severe Fire Danger Index</i>	Low	Low	Low	Low

Fire Danger

Mod

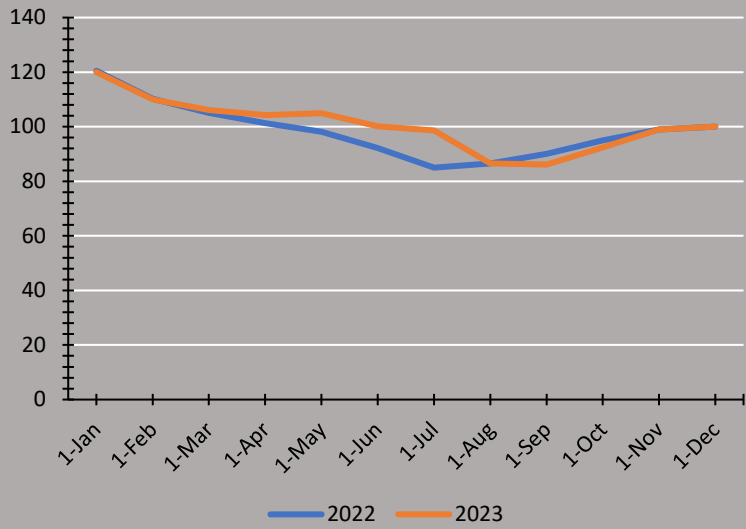
Fire
Restrictions

No

CFPD South Fire Danger Rating Area - Forecast Weather & Fire Danger

Date Observed Indices				
4/8/2024 0:00				
Stations: Cannon Ball, Goodman Point				
Date:	8-Apr	5-Jan	15-Jan	22-Jan
Max Temp (F)	64	0	0	0
Minimum RH (%)	34.4	0	0	0
Windspeed (20'-mph)	1	0	0	0
Wind Direction	S	0	0	0
1-hr(%)	0	0	0	0
10-hr (%)	16.67%	0	0	0
1000-hr(%)	16.88%	0	0	0
0				
Recommended Fire Restrictions	None	None	None	None
<i>Severe Fire Danger Index</i>	Mod	Low	Low	Low

Utah Juniper Average



Utah Juniper Average					
Date	2022	2023			
1-Jan	120.5	120			
1-Feb	110.23	110			
1-Mar	105.05	106.1			
1-Apr	101.26	104.26			
1-May	98.1	104.9			
1-Jun	92.2	100.2			
1-Jul	85	98.66			
1-Aug	86.5	86.56			
1-Sep	90	86.12			
1-Oct	95	92.36			
1-Nov	99	99			
1-Dec	100	100			

Pinyon Pine Average					
Date	2022	2023			
1-Jan	0	0			
1-Feb	0	0			
1-Mar	96.55%	98.65%			
1-Apr	97.50%	97.50%			
1-May	92.56%	90.65%			
1-Jun	85.00%	81.66%			
1-Jul	82.00%	80.70%			
1-Aug	81.00%	82.40%			
1-Sep	82.00%	84.30%			
1-Oct	82.00%	86.36%			
1-Nov	0	0			
1-Dec	0	0			

Tamarix Average					
Date	2022	2023			
1-Jan	0	0			
1-Feb	0	0			
1-Mar	9100.23%	99.60%			
1-Apr	97.26%	96.40%			
1-May	97.00%	95.20%			
1-Jun	91.20%	84.50%			
1-Jul	85.60%	84.00%			
1-Aug	83.90%	82.00%			
1-Sep	80.00%	82.30%			
1-Oct	88.60%	85.00%			
1-Nov	0	0			
1-Dec	0	0			

Russian Olive Average					
Date	2022	2023			
1-Jan	0	0			
1-Feb	0	0			
1-Mar	120.10%	120.33%			
1-Apr	118.99%	119.50%			
1-May	118.92%	118.65%			
1-Jun	117.95%	115.60%			
1-Jul	116.59%	113.99%			
1-Aug	116.99%	114.66%			
1-Sep	113.20%	114.99%			
1-Oct	113.30%	116.99%			
1-Nov	0	0			
1-Dec	0	0			

Sagebrush, Mountain Big Average					
Date	2022	2023			
1-Jan	0	0			
1-Feb	0	0			
1-Mar	240.60%	233.99%			
1-Apr	235.60%	244.66%			
1-May	222.36%	239.55%			
1-Jun	220.65%	222.65%			
1-Jul	218.96%	200.22%			
1-Aug	216.56%	200.00%			
1-Sep	216.59%	210.22%			
1-Oct	215.36%	225.30%			
1-Nov	0	0			
1-Dec	0	0			

Litter Average					
Date	2022	2023			
1-Jan	0	0			
1-Feb	0	0			
1-Mar	8.65%	8.97.98%			
1-Apr	8.02%	7.00%			
1-May	7.65%	6.98%			
1-Jun	6.25%	6.20%			
1-Jul	4.25%	4.89%			
1-Aug	5.26%	4.22%			
1-Sep	6.33%	4.56%			
1-Oct	6.25%	6.55%			
1-Nov	0	0			
1-Dec	0	0			

Grasses Average					
Date	2022	2023			
1-Jan	0	0			
1-Feb	0	0			
1-Mar	56.22%	55.60%			
1-Apr	49.50%	50.20%			
1-May	45.20%	48.26%			
1-Jun	40.20%	46.56%			
1-Jul	39.80%	44.50%			
1-Aug	32.20%	36.20%			
1-Sep	39.30%	32.30%			
1-Oct	42.00%	40.23%			
1-Nov	0	0			
1-Dec	0	0			

10 hour Average					
Date	2022	2023			
1-Jan	0	0			
1-Feb	0	0			
1-Mar	7.56%	7.44%			
1-Apr	7.01%	7.65%			
1-May	6.56%	7.10%			
1-Jun	6.23%	6.98%			
1-Jul	4.26%	6.13%			
1-Aug	6.35%	5.85%			
1-Sep	7.25%	6.35%			
1-Oct	8.56%	6.34%			
1-Nov	0	0			
1-Dec	0	0			

1000 hour Average					
Date	2022	2023			
1-Jan	0	0			
1-Feb	0	0			
1-Mar	8.65%	9.65%			
1-Apr	7.56%	9.10%			
1-May	6.98%	7.56%			
1-Jun	6.32%	6.99%			
1-Jul	6.00%	6.84%			
1-Aug	5.99%	5.99%			
1-Sep	6.95%	6.34%			
1-Oct	6.99%	6.80%			
1-Nov	0	0			
1-Dec	0	0			

Date	2023				
1-Mar					

15-Mar					
1-Apr					
15-Apr					
1-May					
15-May					
1-Jun					
15-Jun					
1-Jul					
15-Jul					
1-Aug	8.06%				
15-Aug	8.06%				
1-Sep					
15-Sep					
1-Oct					
15-Oct					